

# Ways a Weak Chin Affects Aging

## 1. How Chin Shape Influences Aging Perception

A well-defined chin creates a visible break between the face and the neck. It sets the jawline, supports soft tissue, and helps hold the shape of your lower face. When that anchor point isn't quite strong enough, everything below it can appear to droop. Without enough projection at the front of the jaw, your neck can look older, fuller, or less sculpted than it truly is.



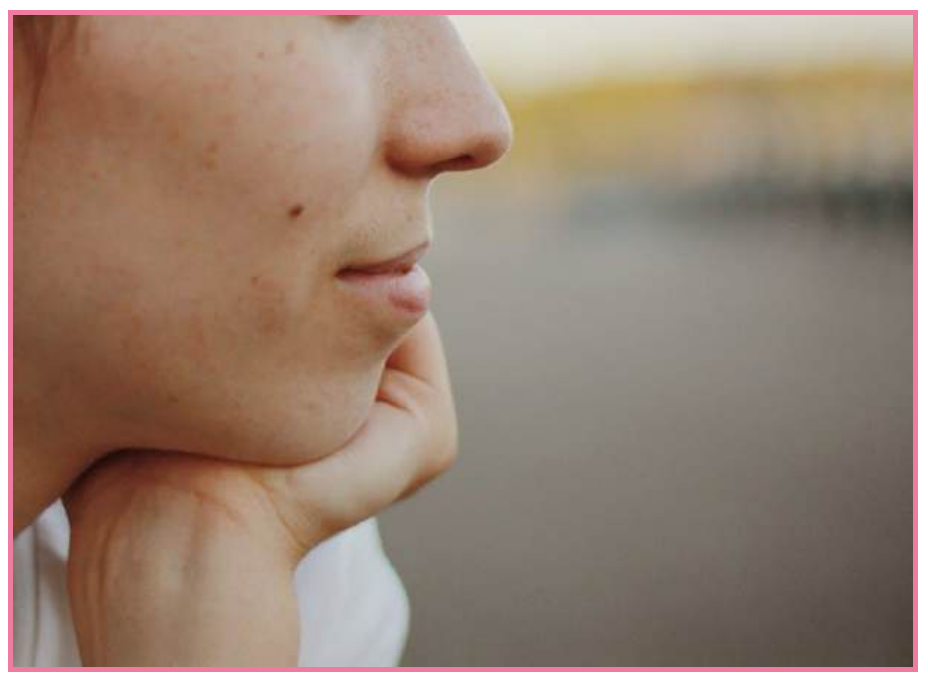
## 2. Signs You May Have a Recessed Chin

You may have a weak chin if you have a smooth or sloping profile with little distinction between the chin and neck, shadows or fullness under the chin, especially in photos, and a jawline that appears short or rounded instead of clean and angular. These signs are often mistaken for early aging or excess fat. In reality, they may be more closely related to skeletal structure than to skin condition.



## 3. Options for Strengthening Chin Definition

The good news? You don't need to undergo major surgery to correct a weak chin or improve your neckline. Skilled plastic surgeons offer minimally invasive, customizable ways to enhance your profile. One option is chin augmentation. Your surgeon places the implant precisely to help it blend with your natural bone structure, resulting in a balanced, long-lasting outcome.



## 4. Keep Balance as the Goal

Enhancing your chin is more about achieving proportion than size. A skilled plastic surgeon doesn't just add volume. They assess your entire facial structure to determine how minor adjustments can improve the harmony between the chin, jaw, and neck. When your chin gains proper support, other features fall into place more gracefully.

## 5. Subtle But Powerful Change

One of the best things about chin-focused treatments is how natural they can look. You won't walk out with a dramatically different face. Instead, you'll find a face with a smoother profile and clearer definition. Friends might notice something looks "better," but they likely won't be able to pinpoint exactly what changed.



## 6. Structure Supports Graceful Aging

The next time you're frustrated with the way your neck looks, take a closer look at your chin. It may be playing a bigger role than you think. No matter what method you choose, restoring balance at the base of your face can make aging feel a little less frustrating and a lot more graceful.